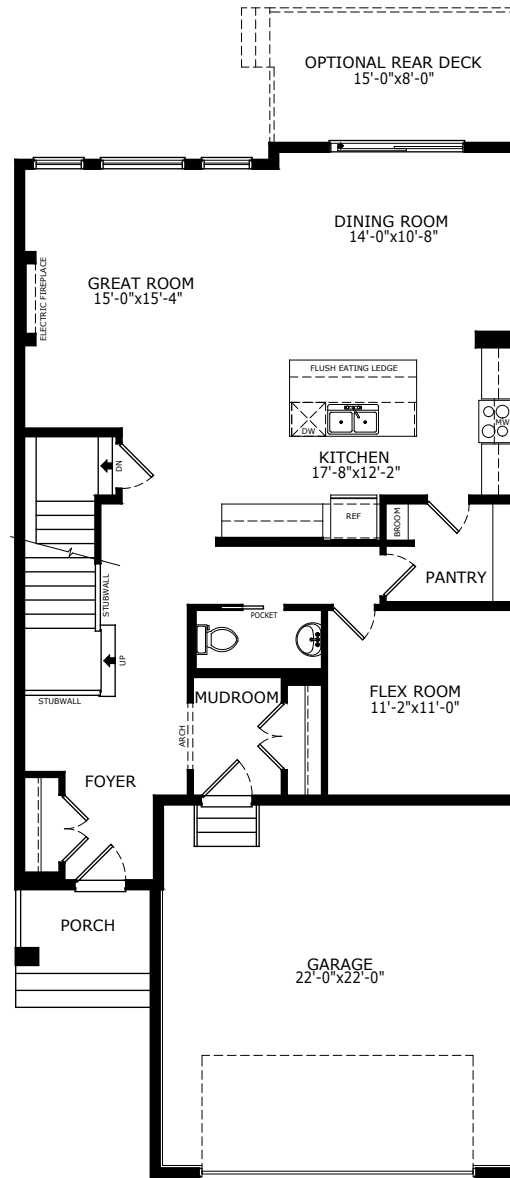
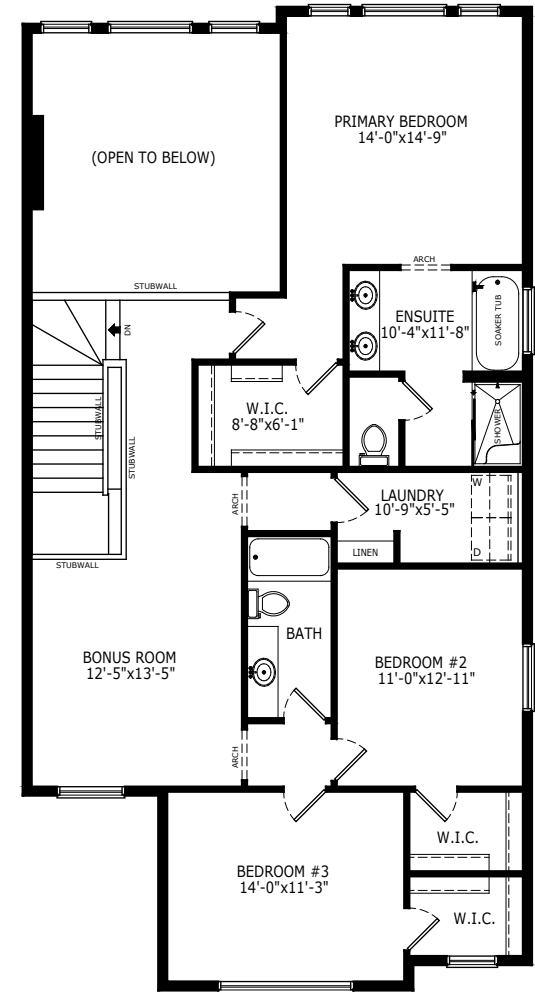


2516 SQ FT  
3 BEDS  
2.5 BATHS

# AMBER



MAIN: 1199 SQ FT



UPPER: 1317 SQ FT

# Sterling HOMES

A QUALICO Company

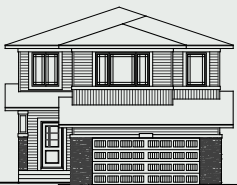
## ELEVATIONS



CRAFTSMAN



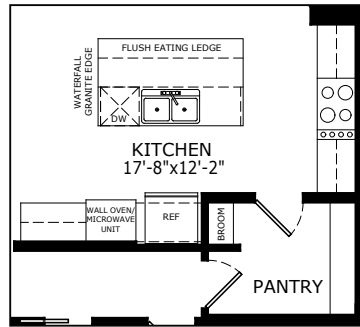
FARMHOUSE



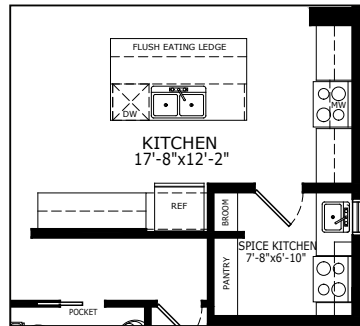
PRAIRIE

## MAIN FLOOR OPTIONS

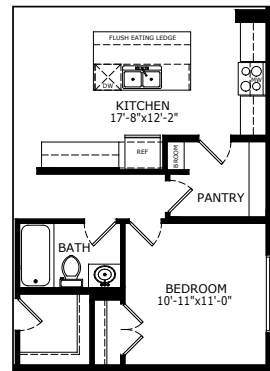
OPTIONAL EXECUTIVE KITCHEN



OPTIONAL SPICE KITCHEN

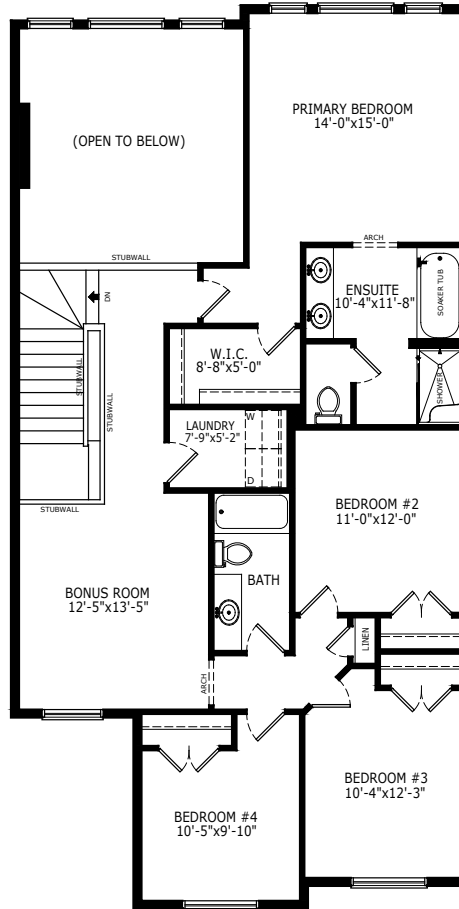


OPTIONAL MAIN FLOOR  
FULL BATH AND BEDROOM



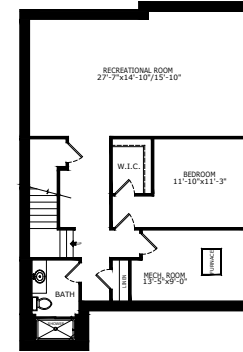
## UPPER FLOOR OPTIONS

OPTIONAL UPPER FLOOR PLAN - 4 BEDROOMS

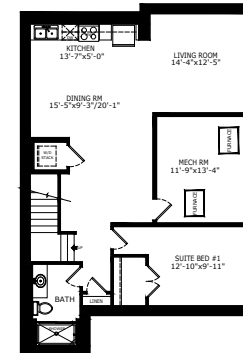


## BASEMENT OPTIONS

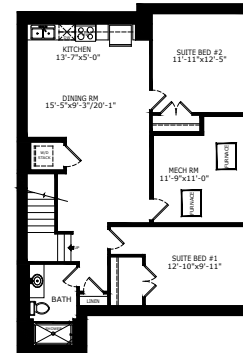
STANDARD 894 SQ FT



1 BEDROOM 'LEGAL  
SUITE' 871 SQ FT

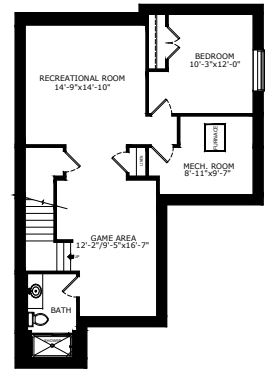


2 BEDROOM 'LEGAL  
SUITE' 905 SQ FT

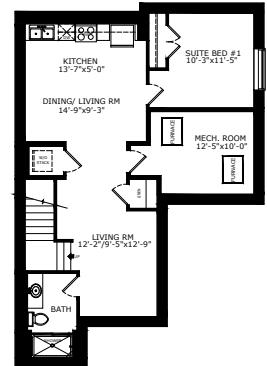


## TANDEM BASEMENT OPTIONS

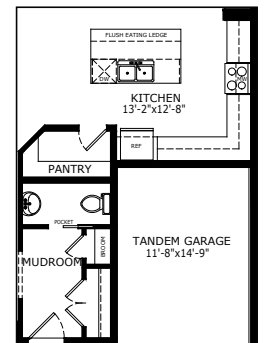
STANDARD 748 SQ FT



1 BEDROOM TANDEM 741 SQ FT



OPTIONAL TANDEM GARAGE



Scan here  
for floorplan  
options and  
more

\*Legal Suite availability varies by community and municipal regulations.

# Build Your Life

STERLINGCALGARY.COM